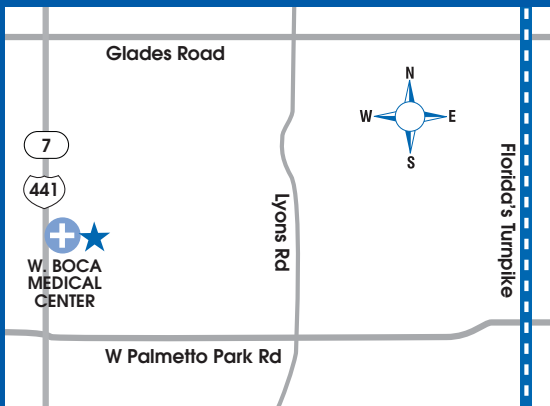


West Boca Medical Arts Pavilion

MEDICAL OFFICE SPACE AVAILABLE

Suites From 1,000 to 24,000 Rentable Square Feet

9960 Central Park Blvd. • Boca Raton, FL 33428



AVAILABLE IMMEDIATELY

- Highly Accessible Location
- On the Campus of West Boca Medical Center
- Fully Renovated, Like New Environment
- Surrounded by Restaurants, Banks, and Shopping
- Available Immediately
- 5-10 year leases at Competitive Terms
- Segregated Physician Parking



www.scottre.com

For Leasing Information Contact:

TOM PARKER

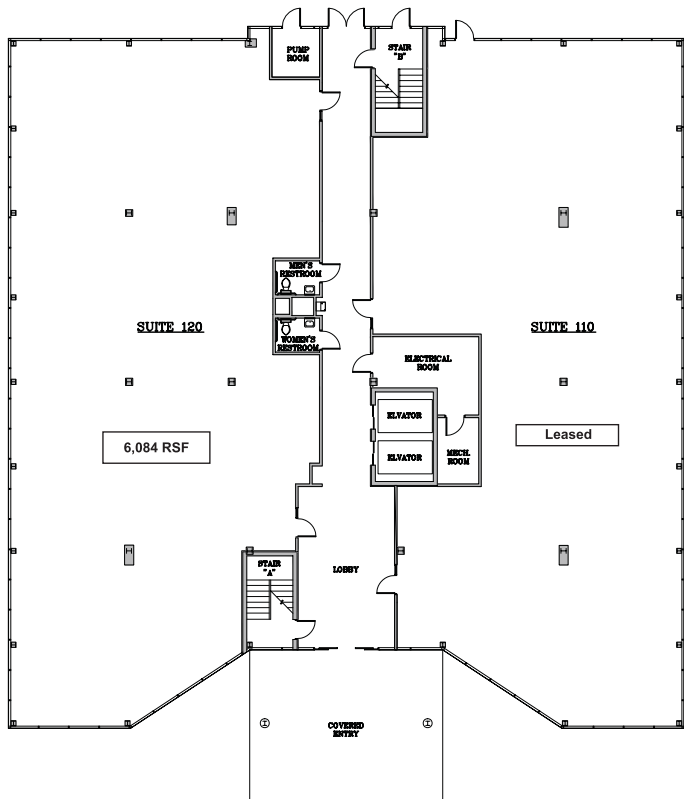
phone 404-252-1200

cell 404-281-5204

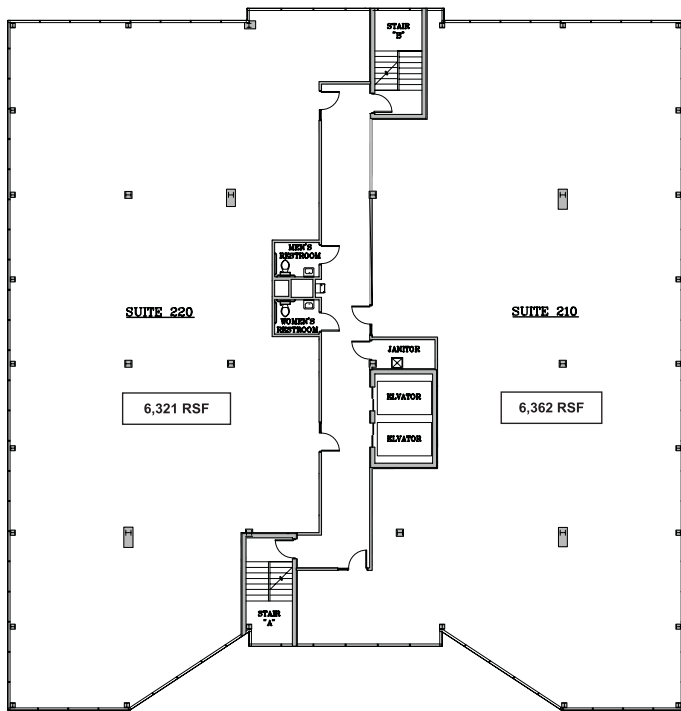
fax 404-252-0600

tparker@scottre.com

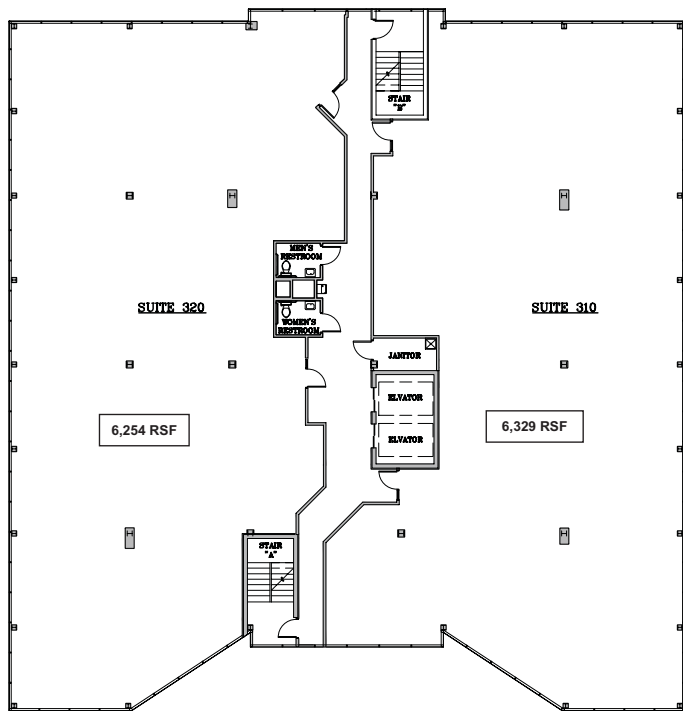
First Floor



Second Floor



Third Floor



Fourth Floor

